



50 YEARS



www.straub.Su

STRAUB-PLAST-PRO

THE PE COMPLETE KIT STRAUB-PLAST-PRO

An axially restrained jointing system allowing a quick and simple installation of pressure pipes made of polyethylene (PE).

STRAUB-PLAST-PRO offers an alternative to traditional jointing methods of PE used in water, waste water, industrial plants and maintenance applications. The complete kit is available for PE pipes in dimension SDR 11 (63.0-180.0 mm; PN 16) and SDR 17 (125.0-355.0 mm; PN 10).

The full product range offers the great advantage that pipes can easily be connected without the need of external power supply and pipe end preparation, even under demanding external weather conditions.

The pipes made of PE 80 or PE 100 are connected with a combination of liner inserts and external shells. The jointing concept allows the product to be assembled easily and is difficult to get wrong.

PE pipes with added protective coatings are available in a variety of designs such as PE pipes with a diffusionproof aluminium foil barrier layer that are commonly preferred to be laid in contaminated soil sites. Thus, pollutants are prevented from entering into the pipe and the medium is prevented from getting into ground soil.

STRAUB-PLAST-PRO also connects such barrier layer pipes easily and safely without any pipe end preparation. Before assembly the pipe outside diameter should be confirmed and checked that it fits into the working range of the individual shell.



Example for ordering | DIN EN:
STRAUB-PLAST-PRO L d90.0, SDR 11

Example for ordering | multilayer:
STRAUB-PLAST-PRO FA d63/DN 50, SDR 11; OD 64-66mm

The product range of STRAUB-PLAST-PRO is combined from different liner inserts and external shells. By this versatile formed-parts-program PE-pipes can be connected easily and fast in every situation.



STRAUB-PLAST-PRO L
Coupler



STRAUB-PLAST-PRO LR
Repair-Coupler
(repairs up to 100 mm)



STRAUB-PLAST-PRO R
Reducer



STRAUB-PLAST-PRO B90
Elbow 90°



STRAUB-PLAST-PRO has been successfully tested according to the **British Standard WIS 4-24-01** and fulfil the requirements to:

- German Standard DVGW-VP609
- European Standard EN 1254-3

www.straub.Su

STRAUB-PLAST-PRO B45
Elbow 45°



STRAUB-PLAST-PRO T
Equal Tee



STRAUB-PLAST-PRO TFA
Flanged Branch Tee ¹



STRAUB-PLAST-PRO FB90
Duck Foot Bend 90° ¹



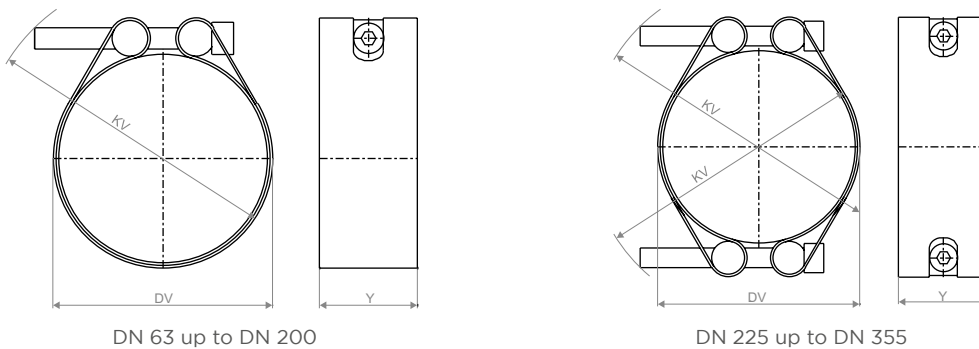
STRAUB-PLAST-PRO FA
Flange Adapter ¹
(loose flange ring is included)



¹ flange bolt set is not supplied (DIN EN 1092-1)

STRAUB-PLAST-PRO SHELLS

PIPE DIMENSIONS ACCORDING TO DIN EN 12201-2 | MULTILAYER PIPES



| DN | DV braced | | KV braced | | Y [mm] | Allen head [mm] | Thread M.. | Torque rate [Nm] |
|-----|-----------------------|------------------|-----------|-----------------|---------|----------------------|----------------------|-----------------------|
| | DIN ³ [mm] | multilayer [mm] | DIN [mm] | multilayer [mm] | | | | |
| 63 | 65 | 67 | 95 | 95 | 47.5 | 10 | 12 | 50 |
| 75 | 79 | 82 ² | 106 | 107 | 47.5 | 10 | 12 | 55 |
| 90 | 94 | 97 | 120 | 121 | 47.5 | 10 | 12 | 60 |
| 110 | 113 | 117 | 139 | 140 | 55 | 10 | 12 | 60 |
| 125 | 129 | 132 | 155 | 156 | 55 | 10 / 14 ⁴ | 12 / 16 ⁴ | 60 / 120 ⁴ |
| 140 | 144 | 147 ² | 170 | 170 | 55 | 14 | 16 | 130 |
| 160 | 165 | 168 | 188 | 189 | 55 | 14 | 16 | 150 |
| 180 | 184 | 188 | 216 | 217 | 55 | 14 | 16 | 160 |
| 200 | 204 | 208 ² | 235 | 236 | 55 | 14 | 16 | 180 |
| 225 | 227 | 230 | 258 | 260 | 55 | 14 | 16 | 160 |
| 250 | 251 | 255 | 282 | 285 | 55 | 14 | 16 | 160 |
| 280 | 282 | 285 | 311 | 313 | 55 | 14 | 16 | 160 |
| 315 | 318 | 321 | 355 | 357 | 60 / 70 | 17 | 20 | 280 |
| 355 | 359 | 362 | 394 | 397 | 60 / 70 | 17 | 20 | 300 |

PIPE DIMENSIONS AND TOLERANCES

Our complete systems are designed for the pipe dimensions according to DIN EN 12201-2:2003 listed below. Multilayer pipes with different outer diameter than DIN EN 12201-2 are available in a variety of designs. These are not standardised and therefore outside diameters and materials used may vary to large extent.

⇒ Due to the additional layers OD's and material of the additive layer may vary (consultation with the producer is necessary, if there is a metal layer integrated); Please note the following pipe dimensions and tolerances.

SDR 11

| DN | OD min | | OD max | | Wall thickness min | | Wall thickness max | | ID ⁵ [mm] |
|-----|-----------------------|-------------------|----------|-----------------|--------------------|-----------------|--------------------|-----------------|----------------------|
| | DIN ³ [mm] | multilayer [mm] | DIN [mm] | multilayer [mm] | DIN [mm] | multilayer [mm] | DIN [mm] | multilayer [mm] | |
| 63 | 63.0 | 64.0 | 63.4 | 65.7 | 5.8 | 6.5 | 6.5 | 7.6 | 51 |
| 75 | 75.0 | 77.0 ² | 75.5 | 79.0 | 6.8 | 7.8 | 7.6 | 9.1 | 61 |
| 90 | 90.0 | 92.0 | 90.6 | 94.0 | 8.2 | 9.3 | 9.2 | 10.7 | 73 |
| 110 | 110.0 | 112.0 | 110.7 | 114.0 | 10.0 | 11.1 | 11.1 | 12.7 | 89 |
| 125 | 125.0 | 127.0 | 125.8 | 129.0 | 11.4 | 12.5 | 12.7 | 14.2 | 101 |
| 140 | 140.0 | 143.0 | 140.9 | 145.0 | 12.7 | 14.0 | 14.1 | 15.9 | 113 |
| 160 | 160.0 | 163.0 | 161.0 | 166.0 | 14.6 | 15.8 | 16.2 | 18.0 | 129 |
| 180 | 180.0 | 183.0 | 181.1 | 186.0 | 16.4 | 17.6 | 18.2 | 20.0 | 145 |

SDR 17

| DN | OD min | | OD max | | Wall thickness min | | Wall thickness max | | ID ⁵ [mm] |
|-----|-----------------------|--------------------|----------|-----------------|--------------------|-----------------|--------------------|-----------------|----------------------|
| | DIN ³ [mm] | multilayer [mm] | DIN [mm] | multilayer [mm] | DIN [mm] | multilayer [mm] | DIN [mm] | multilayer [mm] | |
| 90 | 90.0 | 92.0 | 90.6 | 94.0 | 5.3 | 5.4 | 6.0 | 6.5 | 79 |
| 110 | 110.0 | 112.0 | 110.7 | 114.0 | 6.5 | 7.5 | 7.8 | 8.6 | 97 |
| 125 | 125.0 | 127.0 | 125.8 | 129.0 | 7.4 | 8.5 | 8.3 | 9.8 | 110 |
| 140 | 140.0 | 143.0 ² | 140.9 | 145.0 | 8.3 | 9.4 | 9.3 | 11.1 | 123 |
| 160 | 160.0 | 163.0 | 161.0 | 166.0 | 9.5 | 10.7 | 10.6 | 12.4 | 140 |
| 180 | 180.0 | 183.0 | 181.1 | 186.0 | 10.7 | 11.9 | 11.9 | 13.7 | 158 |
| 200 | 200.0 | 203.0 ² | 201.2 | 206.0 | 11.9 | 13.1 | 13.2 | 15.0 | 176 |
| 225 | 225.0 | 225.0 | 226.4 | 230.0 | 13.4 | 14.6 | 14.9 | 16.6 | 197 |
| 250 | 250.0 | 250.0 | 251.5 | 255.0 | 14.8 | 16.0 | 16.4 | 18.3 | 220 |
| 280 | 280.0 | 280.0 | 281.7 | 286.0 | 16.6 | 17.8 | 18.4 | 20.1 | 246 |
| 315 | 315.0 | 315.0 | 316.9 | 321.0 | 18.7 | 19.9 | 20.7 | 22.4 | 277 |
| 355 | 355.0 | 355.0 | 357.2 | 361.0 | 21.1 | 22.3 | 23.4 | 25.1 | 312 |

² not available from our stock

³ DIN ⇒ pipe dimensions according to DIN EN 12201-2

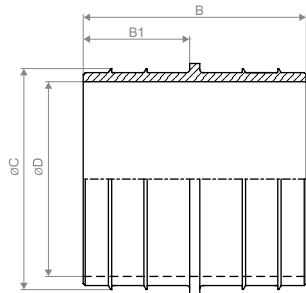
⁴ bolt M16 for SDR 11

⁵ ID = average pipe inside diameter

STRAUB-PLAST-PRO L

LINER

| Components | Materials |
|--------------|---|
| Shells | AISI 316 L or similar |
| Bolts | A4 - 80 |
| Bars | AISI 316 L |
| Liner insert | Carbon steel, Rilsan coated (W270, NSF61, WRAS) |
| Medium | all qualities of water |
| Temperature | -5°C up to 40°C ⁶ |



up to 110 mm: for PN 16 pipes ⁶
 from 125 mm: for PN 16 and PN 10 pipes ⁶
 > 180 mm: for PN 10 pipes ⁶

SDR 11

| OD [mm] | DIN ³ | Article multilayer | B [mm] | B1 [mm] | C [mm] | D [mm] | Weight [kg] |
|---------|------------------|---------------------|--------|---------|--------|--------|-------------|
| 63.0 | 870070 | 870000 | 95 | 45.0 | 49.5 | 41.0 | 1.6 |
| 75.0 | 870075 | 870005 ² | 95 | 45.0 | 59.5 | 50.5 | 1.8 |
| 90.0 | 870080 | 870010 | 95 | 45.0 | 71.0 | 62.0 | 2.0 |
| 110.0 | 870085 | 870015 | 110 | 52.5 | 87.5 | 76.0 | 2.6 |
| 125.0 | 870089 | 870019 | 110 | 52.5 | 99.5 | 86.5 | 3.1 |
| 140.0 | 870094 | 870024 ² | 110 | 52.5 | 111.5 | 97.5 | 4.0 |
| 160.0 | 870099 | 870029 | 110 | 52.5 | 127.5 | 113.5 | 4.4 |
| 180.0 | 870104 | 870034 | 110 | 52.5 | 143.5 | 126.5 | 4.8 |

SDR 17

| OD [mm] | DIN ³ | Article multilayer | B [mm] | B1 [mm] | C [mm] | D [mm] | Weight [kg] |
|---------|------------------|---------------------|--------|---------|--------|--------|-------------|
| 90.0 | 870081 | 870011 | 95 | 45.0 | 77.0 | 66.8 | 2.1 |
| 110.0 | 870086 | 870016 | 110 | 52.5 | 94.5 | 82.3 | 2.7 |
| 125.0 | 870090 | 870020 | 110 | 52.5 | 108.0 | 95.0 | 3.0 |
| 140.0 | 870095 | 870025 ² | 110 | 52.5 | 121.0 | 107.0 | 3.8 |
| 160.0 | 870100 | 870030 | 110 | 52.5 | 138.5 | 124.5 | 4.3 |
| 180.0 | 870105 | 870035 | 110 | 52.5 | 156.0 | 139.0 | 5.1 |
| 200.0 | 870110 | 870040 ² | 110 | 52.5 | 173.5 | 154.5 | 5.5 |
| 225.0 | 870045 | 870045 | 110 | 52.5 | 195.0 | 173.0 | 9.1 |
| 250.0 | 870050 | 870050 | 110 | 52.5 | 217.0 | 193.0 | 10.2 |
| 280.0 | 870055 | 870055 | 110 | 52.5 | 243.0 | 217.0 | 11.9 |
| 315.0 | 870060 | 870060 | 130 | 62.5 | 273.0 | 243.0 | 19.6 |
| 355.0 | 870065 | 870065 | 130 | 62.5 | 308.0 | 274.0 | 23.2 |

Remarks:

- Test pressure at 20°C = 1.5 x PN
- Higher pressure rates on request
- For protecting pipes, please specify inside and outside diameters
- Pipe diameter range and tolerances ⇨ page 4
- Listed weight corresponds to the total product weight (liner insert and shells)

² not available from our stock

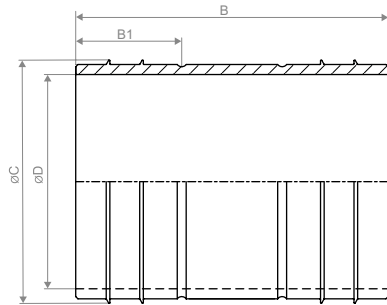
³ DIN ⇨ pipe dimensions according to DIN EN 12201-2

⁶ for permanent temperatures above 20°C, please note the pressure specifications for PE pipes according to DIN 8074

STRAUB-PLAST-PRO LR

REPAIR-COUPLER

| Components | Materials |
|--------------|---|
| Shells | AISI 316 L or similar |
| Bolts | A4 - 80 |
| Bars | AISI 316 L |
| Liner insert | Carbon steel, Rilsan coated (W270, NSF61, WRAS) |
| Medium | all qualities of water |
| Temperature | -5°C up to 40°C ⁶ |



up to 110 mm: for PN 16 pipes ⁶
 from 125 mm: for PN 16 and PN 10 pipes ⁶

SDR 11

| OD [mm] | DIN ³ | Article multilayer | B [mm] | B1 [mm] | C [mm] | D [mm] | Weight [kg] |
|---------|------------------|---------------------|--------|---------|--------|--------|-------------|
| 63.0 | 871114 | 871100 | 195 | 47.5 | 49.5 | 40.0 | 1.9 |
| 75.0 | 871115 | 871101 ² | 195 | 47.5 | 59.5 | 49.5 | 2.2 |
| 90.0 | 871116 | 871102 | 195 | 47.5 | 71.0 | 61.0 | 2.6 |
| 110.0 | 871117 | 871103 | 210 | 55.0 | 87.5 | 75.0 | 3.0 |
| 125.0 | 871123 | 871127 | 210 | 55.0 | 99.5 | 85.5 | 4.0 |
| 140.0 | 871124 | 871128 ² | 210 | 55.0 | 111.5 | 97.5 | 5.2 |
| 160.0 | 871125 | 871129 | 210 | 55.0 | 127.5 | 113.5 | 5.8 |
| 180.0 | 871126 | 871130 | 210 | 55.0 | 143.5 | 126.5 | 6.7 |

SDR 17

| OD [mm] | DIN ³ | Article multilayer | B [mm] | B1 [mm] | C [mm] | D [mm] | Weight [kg] |
|---------|------------------|---------------------|--------|---------|--------|--------|-------------|
| 90.0 | 871133 | 871131 | 195 | 47.5 | 77.0 | 66.8 | 2.7 |
| 110.0 | 871134 | 871132 | 210 | 55.0 | 94.5 | 82.3 | 3.1 |
| 125.0 | 871118 | 871104 | 210 | 55.0 | 108.0 | 94.0 | 4.4 |
| 140.0 | 871119 | 871105 ² | 210 | 55.0 | 121.0 | 107.0 | 5.4 |
| 160.0 | 871120 | 871106 | 210 | 55.0 | 138.5 | 124.5 | 6.1 |
| 180.0 | 871121 | 871107 | 210 | 55.0 | 156.0 | 139.0 | 7.1 |

Remarks:

- Before installing the repair coupler, expose 100 mm clearance between pipe ends
- Other repair-lengths and higher pressure rates on request
- Test pressure at 20°C = 1.5 x PN
- For protecting pipes, please specify inside and outside diameters
- Pipe diameter range and tolerances ⇨ page 4
- Listed weight corresponds to the total product weight (liner insert and shells)

² not available from our stock

³ DIN ⇨ pipe dimensions according to DIN EN 12201-2

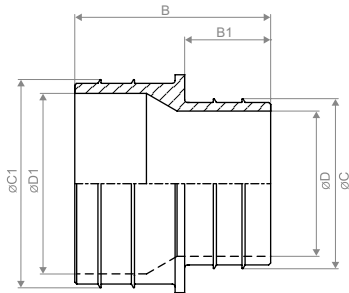
⁶ for permanent temperatures above 20°C, please note the pressure specifications for PE pipes according to DIN 8074

⁷ the O-ring prevents the liner from falling into the plastic pipe; O-ring has no sealing function

STRAUB-PLAST-PRO R

REDUCER

| Components | Materials |
|--------------|---|
| Shells | AISI 316 L or similar |
| Bolts | A4 - 80 |
| Bars | AISI 316 L |
| Liner insert | Carbon steel, Rilsan coated (W270, NSF61, WRAS) |
| Medium | all qualities of water |
| Temperature | -5°C up to 40°C ⁶ |



up to 110 mm: for PN 16 pipes ⁶
 from 125 mm: for PN 10 pipes ⁶

SDR 11

| OD [mm] | Article DIN ³ | Article multilayer | B [mm] | B1 [mm] | C [mm] | C1 [mm] | D [mm] | D1 [mm] | Weight [kg] |
|-------------|--------------------------|--------------------|--------|-----------|--------|---------|--------|---------|-------------|
| 90.0x63.0 | 870235 | 870155 | 95.0 | 45.0 | 49.5 | 71.0 | 41.0 | 62.0 | 2.0 |
| 110.0x90.0 | 870240 | 870160 | 102.5 | 52.5/45.0 | 71.0 | 87.5 | 62.0 | 76.0 | 2.5 |
| 125.0x110.0 | 870245 | 870165 | 110.0 | 52.5 | 87.5 | 99.5 | 76.0 | 86.5 | 3.3 |
| 160.0x110.0 | 870260 | 870176 | 110.0 | 52.5 | 87.5 | 127.5 | 76.0 | 113.5 | 5.0 |
| 160.0x125.0 | 870270 | 870180 | 110.0 | 52.5 | 99.5 | 127.5 | 86.5 | 113.5 | 4.8 |
| 180.0x160.0 | 870280 | 870189 | 110.0 | 52.5 | 127.5 | 143.5 | 113.5 | 126.5 | 5.4 |

SDR 17

| OD [mm] | Article DIN ³ | Article multilayer | B [mm] | B1 [mm] | C [mm] | C1 [mm] | D [mm] | D1 [mm] | Weight [kg] |
|--------------------------|--------------------------|--------------------|--------|---------|--------|---------|--------|---------|-------------|
| 90.0x63.0 | 870236 | 870156 | 95.0 | 45.0 | 49.5 | 77.0 | 41.0 | 66.8 | 2.2 |
| 110.0x90.0 | 870241 | 870161 | 102.5 | 45.0 | 77.0 | 94.5 | 66.8 | 82.3 | 2.6 |
| 125.0x110.0 ⁸ | 870250 | 870170 | 110.0 | 52.5 | 87.5 | 108.0 | 76.0 | 95.0 | 3.2 |
| 160.0x110.0 ⁸ | 870185 | 870178 | 110.0 | 52.5 | 87.5 | 138.5 | 76.0 | 124.5 | 5.4 |
| 160.0x125.0 | 870195 | 870182 | 110.0 | 52.5 | 108.0 | 138.5 | 95.0 | 124.5 | 5.8 |
| 180.0x125.0 | 870205 | 870190 | 110.0 | 52.5 | 108.0 | 156.0 | 95.0 | 139.0 | 6.2 |

Remarks:

- Test pressure at 20°C = 1.5 x PN
- Higher pressure ratings and additional dimensions are available on request
- For protecting pipes, please specify inside and outside diameters
- Pipe diameter range and tolerances ⇨ page 4
- Listed weight corresponds to the total product weight (liner insert and shells)

³ DIN ⇨ pipe dimensions according to DIN EN 12201-2

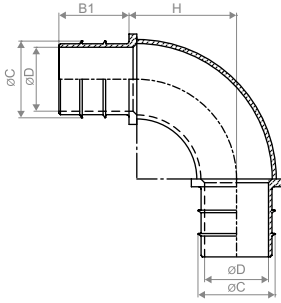
⁶ for permanent temperatures above 20°C, please note the pressure specifications for PE pipes according to DIN 8074

⁸ OD 110 mm in SDR 11

STRAUB-PLAST-PRO B90

ELBOW 90°

| Components | Materials |
|--------------|---|
| Shells | AISI 316 L or similar |
| Bolts | A4 - 80 |
| Bars | AISI 316 L |
| Liner insert | Carbon steel, Rilsan coated (W270, NSF61, WRAS) |
| Medium | all qualities of water |
| Temperature | -5°C up to 40°C ⁶ |



up to 110 mm: for PN 16 pipes ⁶
 from 125 mm: for PN 16 and PN 10 pipes ⁶
 > 180 mm: for PN 10 pipes ⁶

SDR 11

| OD [mm] | DIN ³ | Article multilayer | B1 [mm] | C [mm] | D [mm] | H [mm] | Weight [kg] |
|---------|------------------|---------------------|---------|--------|--------|--------|-------------|
| 63.0 | 870520 | 870450 | 45.0 | 49.5 | 41.0 | 69.0 | 2.0 |
| 75.0 | 870525 | 870455 ² | 45.0 | 59.5 | 50.5 | 77.0 | 2.3 |
| 90.0 | 870530 | 870460 | 45.0 | 71.0 | 62.0 | 97.0 | 3.2 |
| 110.0 | 870535 | 870465 | 52.5 | 87.5 | 76.0 | 122.0 | 3.7 |
| 125.0 | 870539 | 870469 | 52.5 | 99.5 | 86.5 | 138.0 | 6.1 |
| 140.0 | 870544 | 870474 ² | 52.5 | 111.5 | 97.5 | 147.0 | 6.9 |
| 160.0 | 870549 | 870479 | 52.5 | 127.5 | 113.5 | 180.0 | 9.3 |
| 180.0 | 870554 | 870484 | 52.5 | 143.5 | 126.5 | 200.0 | 10.6 |

SDR 17

| OD [mm] | DIN ³ | Article multilayer | B1 [mm] | C [mm] | D [mm] | H [mm] | Weight [kg] |
|---------|---------------------|---------------------|---------|--------|--------|--------|-------------|
| 90.0 | 870531 | 870461 | 45.0 | 77.0 | 66.8 | 100.0 | 3.3 |
| 110.0 | 870536 | 870466 | 52.5 | 94.5 | 82.3 | 122.0 | 3.8 |
| 125.0 | 870540 | 870470 | 52.5 | 108.0 | 95.0 | 147.0 | 6.0 |
| 140.0 | 870545 | 870475 ² | 52.5 | 121.0 | 107.0 | 157.0 | 7.1 |
| 160.0 | 870550 | 870480 | 52.5 | 138.5 | 124.5 | 195.0 | 8.3 |
| 180.0 | 870555 | 870485 | 52.5 | 156.0 | 139.0 | 226.0 | 10.8 |
| 225.0 | 870495 ² | 870495 ² | 52.5 | 195.0 | 173.0 | 280.0 | 19.6 |
| 250.0 | 870500 ² | 870500 ² | 52.5 | 217.0 | 193.0 | 325.0 | 26.0 |
| 280.0 | 870505 ² | 870505 ² | 52.5 | 243.0 | 217.0 | 398.0 | 37.0 |
| 315.0 | 870510 ² | 870510 ² | 52.5 | 273.0 | 243.0 | 401.0 | 44.5 |
| 355.0 | 870515 ² | 870515 ² | 52.5 | 308.0 | 274.0 | 477.0 | 63.2 |

Remarks:

- Test pressure at 20°C = 1.5 x PN
- Higher pressure ratings and additional dimensions are available on request
- For protecting pipes, please specify inside and outside diameters
- Pipe diameter range and tolerances ⇨ page 4
- Listed weight corresponds to the total product weight (linser insert and shells)

² not available from our stock

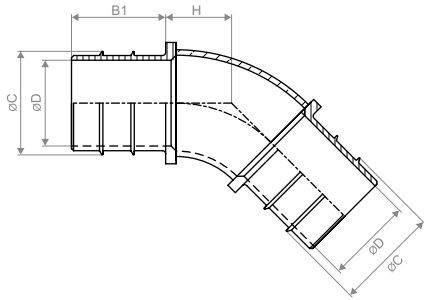
³ DIN ⇨ pipe dimensions according to DIN EN 12201-2

⁶ for permanent temperatures above 20°C, please note the pressure specifications for PE pipes according to DIN 8074

STRAUB-PLAST-PRO B45

ELBOW 45°

| Components | Materials |
|--------------|---|
| Shells | AISI 316 L or similar |
| Bolts | A4 - 80 |
| Bars | AISI 316 L |
| Liner insert | Carbon steel, Rilsan coated (W270, NSF61, WRAS) |
| Medium | all qualities of water |
| Temperature | -5°C up to 40°C ⁶ |



up to 110 mm: for PN 16 pipes ⁶
 from 125 mm: for PN 16 and PN 10 pipes ⁶
 > 180 mm: for PN 10 pipes ⁶

SDR 11

| OD [mm] | DIN ³ | Article multilayer | B1 [mm] | C [mm] | D [mm] | H [mm] | Weight [kg] |
|---------|------------------|---------------------|---------|--------|--------|--------|-------------|
| 63.0 | 870642 | 870600 | 45.0 | 49.5 | 41.0 | 32.0 | 1.8 |
| 75.0 | 870645 | 870603 ² | 45.0 | 59.5 | 50.5 | 35.0 | 2.0 |
| 90.0 | 870648 | 870606 | 45.0 | 71.0 | 62.0 | 43.0 | 2.3 |
| 110.0 | 870651 | 870609 | 52.5 | 87.5 | 76.0 | 53.0 | 3.1 |
| 125.0 | 870653 | 870611 | 52.5 | 99.5 | 86.5 | 60.0 | 4.9 |
| 140.0 | 870656 | 870614 ² | 52.5 | 111.5 | 97.5 | 64.0 | 5.2 |
| 160.0 | 870659 | 870617 | 52.5 | 127.5 | 113.5 | 77.5 | 7.4 |
| 180.0 | 870662 | 870620 | 52.5 | 143.5 | 126.5 | 89.0 | 8.1 |

SDR 17

| OD [mm] | DIN ³ | Article multilayer | B1 [mm] | C [mm] | D [mm] | H [mm] | Weight [kg] |
|---------|---------------------|---------------------|---------|--------|--------|--------|-------------|
| 90.0 | 870649 | 870607 | 45.0 | 77.0 | 66.8 | 44.4 | 2.4 |
| 110.0 | 870652 | 870610 | 52.5 | 94.5 | 82.3 | 53.5 | 3.2 |
| 125.0 | 870654 | 870612 | 52.5 | 108.0 | 95.0 | 64.0 | 4.9 |
| 140.0 | 870657 | 870615 ² | 52.5 | 121.0 | 107.0 | 68.0 | 6.5 |
| 160.0 | 870660 | 870618 | 52.5 | 138.5 | 124.5 | 84.0 | 7.7 |
| 180.0 | 870663 | 870621 | 52.5 | 156.0 | 139.0 | 94.0 | 8.2 |
| 225.0 | 870627 ² | 870627 ² | 52.5 | 195.0 | 173.0 | 117.0 | 14.9 |
| 250.0 | 870630 ² | 870630 ² | 52.5 | 217.0 | 193.0 | 131.0 | 18.5 |
| 280.0 | 870633 ² | 870633 ² | 52.5 | 243.0 | 217.0 | 162.0 | 25.0 |
| 315.0 | 870636 ² | 870636 ² | 52.5 | 273.0 | 243.0 | 163.0 | 32.0 |
| 355.0 | 870639 ² | 870639 ² | 52.5 | 308.0 | 274.0 | 194.0 | 43.2 |

Remarks:

- Test pressure at 20°C = 1.5 x PN
- Higher pressure ratings and additional dimensions are available on request
- For protecting pipes, please specify inside and outside diameters
- Pipe diameter range and tolerances ⇨ page 4
- Listed weight corresponds to the total product weight (linser insert and shells)

² not available from our stock

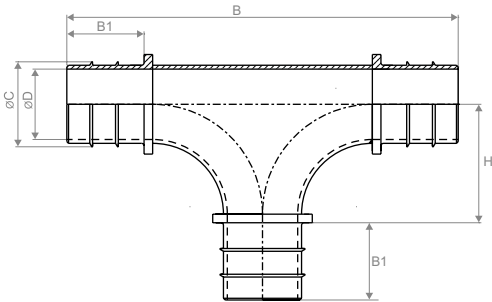
³ DIN ⇨ pipe dimensions according to DIN EN 12201-2

⁶ for permanent temperatures above 20°C, please note the pressure specifications for PE pipes according to DIN 8074

STRAUB-PLAST-PRO T

EQUAL TEE

| Components | Materials |
|--------------|---|
| Shells | AISI 316 L or similar |
| Bolts | A4 - 80 |
| Bars | AISI 316 L |
| Liner insert | Carbon steel, Rilsan coated (W270, NSF61, WRAS) |
| Medium | all qualities of water |
| Temperature | -5°C up to 40°C ⁶ |



up to 110 mm: for PN 16 pipes ⁶
 from 125 mm: for PN 16 and PN 10 pipes ⁶
 > 180 mm: for PN 10 pipes ⁶

SDR 11

| OD [mm] | DIN ³ | Article multilayer | B [mm] | B1 [mm] | C [mm] | D [mm] | H [mm] | Weight [kg] |
|---------|------------------|---------------------|--------|---------|--------|--------|--------|-------------|
| 63.0 | 870370 | 870300 | 214.0 | 45.0 | 49.5 | 41.0 | 62.0 | 3.0 |
| 75.0 | 870375 | 870305 ² | 228.0 | 45.0 | 59.5 | 50.5 | 69.0 | 4.0 |
| 90.0 | 870380 | 870310 | 252.0 | 45.0 | 71.0 | 62.0 | 81.0 | 5.3 |
| 110.0 | 870385 | 870315 | 287.0 | 52.5 | 87.5 | 76.0 | 91.0 | 7.4 |
| 125.0 | 870389 | 870319 | 315.0 | 52.5 | 99.5 | 86.5 | 105.0 | 7.5 |
| 140.0 | 870394 | 870324 ² | 315.0 | 52.5 | 111.5 | 97.5 | 105.0 | 8.2 |
| 160.0 | 870399 | 870329 | 355.0 | 52.5 | 127.5 | 113.5 | 125.0 | 11.6 |
| 180.0 | 870404 | 870334 | 363.0 | 52.5 | 143.5 | 126.5 | 129.0 | 12.2 |

SDR 17

| OD [mm] | DIN ³ | Article multilayer | B [mm] | B1 [mm] | C [mm] | D [mm] | H [mm] | Weight [kg] |
|---------|---------------------|---------------------|--------|---------|--------|--------|--------|-------------|
| 90.0 | 870381 | 870311 | 252.0 | 45.0 | 77.0 | 66.8 | 81.0 | 5.4 |
| 110.0 | 870386 | 870316 | 287.0 | 52.5 | 94.5 | 82.3 | 91.0 | 7.5 |
| 125.0 | 870390 | 870320 | 325.0 | 52.5 | 108.0 | 95.0 | 110.0 | 8.9 |
| 140.0 | 870395 | 870325 ² | 325.0 | 52.5 | 121.0 | 107.0 | 110.0 | 12.5 |
| 160.0 | 870400 | 870330 | 363.0 | 52.5 | 138.5 | 124.5 | 129.0 | 16.1 |
| 180.0 | 870405 | 870335 | 401.0 | 52.5 | 156.0 | 139.0 | 148.0 | 19.0 |
| 225.0 | 870345 ² | 870345 ² | 401.0 | 52.5 | 195.0 | 173.0 | 148.0 | 20.1 |
| 250.0 | 870350 ² | 870350 ² | 471.0 | 52.5 | 217.0 | 193.0 | 183.0 | 24.5 |
| 280.0 | 870355 ² | 870355 ² | 471.0 | 52.5 | 243.0 | 217.0 | 183.0 | 28.6 |
| 315.0 | 870360 ² | 870360 ² | 547.0 | 52.5 | 273.0 | 243.0 | 221.0 | 44.4 |
| 355.0 | 870365 ² | 870365 ² | 623.0 | 52.5 | 308.0 | 274.0 | 259.0 | 53.8 |

Remarks:

- Test pressure at 20°C = 1.5 x PN
- Higher pressure ratings and additional dimensions are available on request
- For protecting pipes, please specify inside and outside diameters
- Pipe diameter range and tolerances ⇨ page 4
- Listed weight corresponds to the total product weight (liner insert and shells)

² not available from our stock

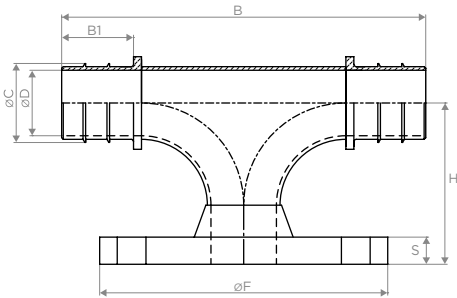
³ DIN ⇨ pipe dimensions according to DIN EN 12201-2

⁶ for permanent temperatures above 20°C, please note the pressure specifications for PE pipes according to DIN 8074

STRAUB-PLAST-PRO TFA

FLANGED BRANCH TEE

| Components | Materials |
|--------------|---|
| Shells | AISI 316 L or similar |
| Bolts | A4 - 80 |
| Bars | AISI 316 L |
| Liner insert | Carbon steel, Rilsan coated (W270, NSF61, WRAS) |
| Medium | all qualities of water |
| Temperature | -5°C up to 40°C ⁶ |



up to 110 mm: for PN 16 pipes ⁶
 from 125 mm: for PN 10 pipes ⁶

SDR 11

| OD [mm] | Article DIN ³ | Article multilayer | B [mm] | B1 [mm] | C [mm] | D [mm] | H [mm] | F [mm] | S [mm] | Flange PN 16 | Bolts Quan./Dim. | Weight [kg] |
|---------|--------------------------|--------------------|--------|---------|--------|--------|--------|--------|--------|--------------|------------------|-------------|
| 90.0 | 870757 | 870703 | 252.0 | 45.0 | 71.0 | 62.0 | 176.0 | 200 | 20 | DN 80 | 8x, M16 | 8.9 |
| 90.0 | 870760 | 870706 | 252.0 | 45.0 | 71.0 | 62.0 | 178.0 | 220 | 20 | DN 100 | 8x, M16 | 9.1 |
| 110.0 | 870763 | 870709 | 287.0 | 52.5 | 87.5 | 76.0 | 136.0 | 200 | 20 | DN 80 | 8x, M16 | 9.5 |
| 110.0 | 870766 | 870712 | 287.0 | 52.5 | 87.5 | 76.0 | 188.0 | 220 | 20 | DN 100 | 8x, M16 | 9.7 |

SDR 17

| OD [mm] | Article DIN ³ | Article multilayer | B [mm] | B1 [mm] | C [mm] | D [mm] | H [mm] | F [mm] | S [mm] | Flange PN 10 | Bolts Quan./Dim. | Weight [kg] |
|---------|--------------------------|--------------------|--------|---------|--------|--------|--------|--------|--------|--------------|------------------|-------------|
| 90.0 | 870758 | 870704 | 252.0 | 45.0 | 77.0 | 66.8 | 176.0 | 200 | 20 | DN 80 | 8x, M16 | 9.0 |
| 90.0 | 870761 | 870707 | 252.0 | 45.0 | 77.0 | 66.8 | 178.0 | 220 | 20 | DN 100 | 8x, M16 | 9.2 |
| 110.0 | 870764 | 870710 | 287.0 | 52.5 | 94.5 | 82.3 | 136.0 | 200 | 20 | DN 80 | 8x, M16 | 9.6 |
| 110.0 | 870767 | 870713 | 287.0 | 52.5 | 94.5 | 82.3 | 188.0 | 220 | 20 | DN 100 | 8x, M16 | 9.8 |
| 125.0 | 870769 | 870715 | 287.0 | 52.5 | 108.0 | 95.0 | 136.0 | 200 | 20 | DN 80 | 8x, M16 | 12.0 |
| 125.0 | 870772 | 870718 | 325.0 | 52.5 | 108.0 | 95.0 | 157.0 | 220 | 20 | DN 100 | 8x, M16 | 12.2 |
| 160.0 | 870775 | 870721 | 287.0 | 52.5 | 138.5 | 124.5 | 161.0 | 200 | 20 | DN 80 | 8x, M16 | 16.2 |
| 160.0 | 870778 | 870724 | 325.0 | 52.5 | 138.5 | 124.5 | 169.0 | 220 | 20 | DN 100 | 8x, M16 | 16.9 |
| 160.0 | 870781 | 870727 | 363.0 | 52.5 | 138.5 | 124.5 | 229.0 | 285 | 22 | DN 150 | 8x, M20 | 20.4 |
| 180.0 | 870784 | 870730 | 325.0 | 52.5 | 156.0 | 139.0 | 174.0 | 200 | 20 | DN 80 | 8x, M16 | 19.6 |
| 180.0 | 870787 | 870733 | 325.0 | 52.5 | 156.0 | 139.0 | 182.0 | 220 | 20 | DN 100 | 8x, M16 | 20.0 |
| 180.0 | 870790 | 870736 | 401.0 | 52.5 | 156.0 | 139.0 | 198.0 | 285 | 22 | DN 150 | 8x, M20 | 23.4 |

Remarks:

- Flange according to DIN 2633 / EN 1092-1
- Test pressure at 20°C = 1.5 x PN
- Higher pressure ratings and additional dimensions are available on request
- For protecting pipes, please specify inside and outside diameters
- Pipe diameter range and tolerances ⇒ page 4
- Listed weight corresponds to the total product weight (liner insert and shells)
- Flange bolt set is not supplied

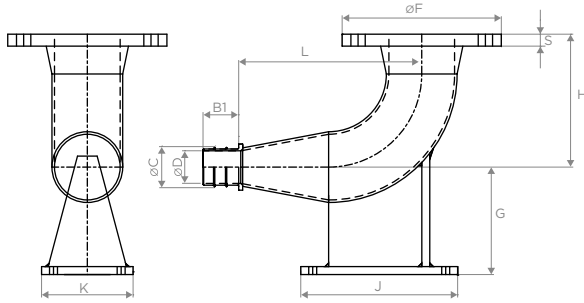
³ DIN ⇒ pipe dimensions according to DIN EN 12201-2

⁶ for permanent temperatures above 20°C, please note the pressure specifications for PE pipes according to DIN 8074

STRAUB-PLAST-PRO FB90

DUCK FOOT BEND 90°

| Components | Materials |
|--------------|---|
| Shells | AISI 316 L or similar |
| Bolts | A4 - 80 |
| Bars | AISI 316 L |
| Liner insert | Carbon steel, Rilsan coated (W270, NSF61, WRAS) |
| Medium | all qualities of water |
| Temperature | -5°C up to 40°C ⁶ |



up to 110 mm: for PN 16 pipes ⁶
 from 125 mm: for PN 10 pipes ⁶

SDR 11

| OD [mm] | Article DIN ³ | Article multilayer | B1 [mm] | C [mm] | D [mm] | H [mm] | F [mm] | G [mm] | J [mm] | K [mm] | L [mm] | S [mm] | Flange PN 16 | Bolts Quan./Dim. | Weight [kg] |
|---------|--------------------------|--------------------|---------|--------|--------|--------|--------|--------|--------|--------|--------|--------|--------------|------------------|-------------|
| 63.0 | 870850 | 870800 | 45.0 | 49.5 | 41.0 | 167.0 | 200 | 135.0 | 152.0 | 90 | 275.0 | 20 | DN 80 | 8x, M16 | 9.4 |
| 90.0 | 870855 | 870805 | 45.0 | 71.0 | 62.0 | 167.0 | 200 | 135.0 | 152.0 | 115 | 235.0 | 20 | DN 80 | 8x, M16 | 10.0 |
| 110.0 | 870860 | 870810 | 52.5 | 87.5 | 76.0 | 167.0 | 200 | 135.0 | 152.0 | 130 | 230.5 | 20 | DN 80 | 8x, M16 | 10.7 |

SDR 17

| OD [mm] | Article DIN ³ | Article multilayer | B1 [mm] | C [mm] | D [mm] | H [mm] | F [mm] | G [mm] | J [mm] | K [mm] | L [mm] | S [mm] | Flange PN 10 | Bolts Quan./Dim. | Weight [kg] |
|---------|--------------------------|--------------------|---------|--------|--------|--------|--------|--------|--------|--------|--------|--------|--------------|------------------|-------------|
| 90.0 | 870856 | 870806 | 45.0 | 77.0 | 66.8 | 167.0 | 200 | 135.0 | 152.0 | 115 | 190.0 | 20 | DN 80 | 8x, M16 | 10.1 |
| 110.0 | 870861 | 870811 | 52.5 | 94.5 | 82.3 | 167.0 | 200 | 135.0 | 152.0 | 130 | 178.0 | 20 | DN 80 | 8x, M16 | 10.8 |
| 125.0 | 870865 | 870815 | 52.5 | 108.0 | 95.0 | 167.0 | 200 | 135.0 | 152.0 | 150 | 242.5 | 20 | DN 80 | 8x, M16 | 11.1 |
| 160.0 | 870870 | 870820 | 52.5 | 138.5 | 124.5 | 167.0 | 200 | 135.0 | 152.0 | 180 | 309.5 | 20 | DN 80 | 8x, M16 | 16.2 |
| 180.0 | 870875 | 870825 | 52.5 | 156.0 | 139.0 | 167.0 | 200 | 135.0 | 152.0 | 200 | 346.5 | 20 | DN 80 | 8x, M16 | 19.2 |

Remarks:

- Flange according to DIN 2633 / EN 1092-1
- Test pressure at 20°C = 1.5 x PN
- Higher pressure ratings and additional dimensions are available on request
- For protecting pipes, please specify inside and outside diameters
- Pipe diameter range and tolerances ⇒ page 4
- Listed weight corresponds to the total product weight (liner insert and shells)
- Flange bolt set is not supplied

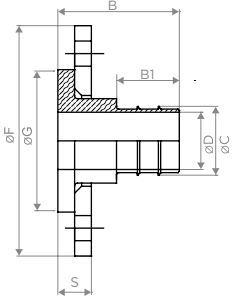
³ DIN ⇒ pipe dimensions according to DIN EN 12201-2

⁶ for permanent temperatures above 20°C, please note the pressure specifications for PE pipes according to DIN 8074

STRAUB-PLAST-PRO FA

FLANGE ADAPTER

| Components | Materials |
|--------------|---|
| Shells | AISI 316 L or similar |
| Bolts | A4 - 80 |
| Bars | AISI 316 L |
| Liner insert | Carbon steel, Rilsan coated (W270, NSF61, WRAS) |
| Medium | all qualities of water |
| Temperature | -5°C up to 40°C ⁶ |



up to 110 mm: for PN 16 pipes ⁶
 from 125 mm: for PN 16 and PN 10 pipes ⁶
 > 180 mm: for PN 10 pipes ⁶

| SDR 11 | | | | | | | | | | | | |
|---------|--------------------------|---------------------|--------|---------|--------|--------|--------|---------------------|--------|--------------|------------------|-------------|
| OD [mm] | Article DIN ³ | Article multilayer | B [mm] | B1 [mm] | C [mm] | D [mm] | F [mm] | G ² [mm] | S [mm] | Flange PN 16 | Bolts Quan./Dim. | Weight [kg] |
| 63.0 | 870936 | 870900 | 83.0 | 45.0 | 49.5 | 41.0 | 165 | 107.0 | 28 | DN 50 | 4x, M16 | 2.4 |
| 63.0 | 870939 | 870903 | 85.0 | 45.0 | 49.5 | 41.0 | 202 | 142.0 | 30 | DN 80 | 8x, M16 | 4.1 |
| 75.0 | 870942 | 870904 ² | 85.0 | 45.0 | 59.5 | 50.5 | 187 | 127.0 | 28 | DN 65 | 4x, M16 | 3.4 |
| 90.0 | 870945 | 870906 | 85.0 | 45.0 | 71.0 | 62.0 | 202 | 142.0 | 30 | DN 80 | 8x, M16 | 3.8 |
| 110.0 | 870948 | 870909 | 92.5 | 52.5 | 87.5 | 76.0 | 220 | 162.0 | 30 | DN 100 | 8x, M16 | 4.0 |
| 125.0 | 870963 | 870910 | 92.5 | 52.5 | 99.5 | 86.5 | 220 | 162.0 | 30 | DN 100 | 8x, M16 | 4.6 |
| 140.0 | 870966 | 870911 ² | 92.5 | 52.5 | 111.5 | 97.5 | 250 | 192.0 | 34 | DN 125 | 8x, M16 | 6.6 |
| 160.0 | 870969 | 870914 | 104.5 | 52.5 | 127.5 | 113.5 | 286 | 218.0 | 36 | DN 150 | 8x, M20 | 11.1 |
| 180.0 | 870972 | 870917 | 104.5 | 52.5 | 143.5 | 126.5 | 286 | 218.0 | 36 | DN 150 | 8x, M20 | 10.2 |

| SDR 17 | | | | | | | | | | | | |
|---------|--------------------------|---------------------|--------|---------|--------|--------|--------|---------------------|--------|--------------|------------------|-------------|
| OD [mm] | Article DIN ³ | Article multilayer | B [mm] | B1 [mm] | C [mm] | D [mm] | F [mm] | G ² [mm] | S [mm] | Flange PN 10 | Bolts Quan./Dim. | Weight [kg] |
| 90.0 | 970946 | 970907 | 85.0 | 45.0 | 77.0 | 66.8 | 200 | 138.0 | 30 | DN 80 | 8x, M16 | 3.9 |
| 110.0 | 870949 | 870908 | 92.5 | 52.5 | 94.5 | 82.3 | 218 | 158.0 | 30 | DN 100 | 8x, M16 | 5.0 |
| 125.0 | 870951 | 870912 | 92.5 | 52.5 | 108.0 | 95.0 | 220 | 162.0 | 30 | DN 100 | 8x, M16 | 4.2 |
| 140.0 | 870954 | 870913 ² | 92.5 | 52.5 | 121.0 | 107.0 | 250 | 192.0 | 34 | DN 125 | 8x, M16 | 6.1 |
| 160.0 | 870957 | 870915 | 104.5 | 52.5 | 138.5 | 124.5 | 286 | 218.0 | 36 | DN 150 | 8x, M20 | 10.2 |
| 180.0 | 870960 | 870918 | 104.5 | 52.5 | 156.0 | 139.0 | 286 | 218.0 | 36 | DN 150 | 8x, M20 | 9.0 |
| 200.0 | 870975 | 870920 ² | 127.0 | 52.5 | 173.5 | 154.5 | 340 | 273.0 | 39 | DN 200 | 8x, M20 | 19.2 |
| 225.0 | 870922 | 870922 | 127.0 | 52.5 | 195.0 | 173.0 | 340 | 273.0 | 39 | DN 200 | 8x, M20 | 17.7 |
| 250.0 | 870924 | 870924 | 133.0 | 52.5 | 217.0 | 193.0 | 409 | 328.0 | 45 | DN 250 | 12x, M20 | 31.7 |
| 280.0 | 870926 | 870926 | 133.0 | 52.5 | 243.0 | 217.0 | 409 | 328.0 | 45 | DN 250 | 12x, M20 | 27.0 |
| 315.0 | 870928 | 870928 | 150.0 | 62.5 | 273.0 | 243.0 | 463 | 378.0 | 52 | DN 300 | 12x, M20 | 40.7 |
| 355.0 | 870930 | 870930 | 158.0 | 62.5 | 308.0 | 274.0 | 515 | 438.0 | 60 | DN 350 | 16x, M20 | 54.5 |

Remarks:

- Flange according to DIN 2633 / EN 1092-1, hole pattern according to EN 1092-1
- Test pressure at 20°C = 1.5 x PN
- Higher pressure ratings and additional dimensions are available on request
- For protecting pipes, please specify inside and outside diameters
- Pipe diameter range and tolerances ⇒ page 4
- Listed weight corresponds to the total product weight (liner insert and shells)
- Flange bolt set is not supplied

² not available from our stock

³ DIN ⇒ pipe dimensions according to DIN EN 12201-2

⁶ for permanent temperatures above 20°C, please note the pressure specifications for PE pipes according to DIN 8074

⁹ outside diameter for gasket

THE REPAIR CONCEPT

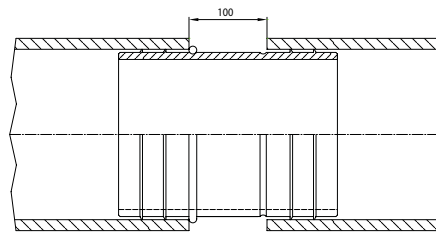
(Repair-Coupler)



Damaged PE pipes can easily be repaired with the STRAUB-PLAST-PRO repair-coupler. Repairs up to a length of 100 mm are possible.



Expose 100 mm of pipe. Slightly bend the pipe ends sideward and insert the repair coupler to the O-Ring into one of the two pipe ends. Align the shells to the pipe ends.



The pipe ends may be centred to each other again and the repair couplers aligned using the notches on the inner coupler. The clamps are to be tightened according to the torque indicated on the label.

The O-Ring prevents the repair coupler from completely sliding into the pipe.

www.straub.Su



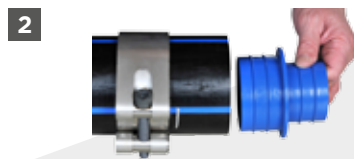
Due to the variety of possible applications, STRAUB-PLAST-PRO is the genuine alternative to welding of PE pipes.

EXAMPLE STRAUB-PLAST-PRO R

(Reducer)



Slide the Shells over both pipes.



Push the reducer into the first tube until it stops.



Push the tubes together as far as they will go.



Align the shells to the pipe ends.



Tighten the locking bolts alternately with a torque wrench to the final torque rate indicated on the label of the shell. Repeat alternately the tightening sequence until a quarter turn (90°) or less is needed to reach the required torque.

- Complete kit
- Quickly and easily installed
- Installation without the need of external power supply
- May be installed in adverse weather conditions
- For pipe connections in contaminated soils
- Highly resistant against corrosion
- No pipe end preparation is required
- No dead end
- Stronger than a PE 100 pipe

www.straub.Su

LIABILITY DISCLAIMER

The information and data in this leaflet are intended to assist the user in the proper selection of STRAUB products. This information may contain inaccuracies or typographical errors. Furthermore, all the information contained in this leaflet list is subject to change by STRAUB Werke AG without prior notice as a result of product re-designs, product improvements or other reasons.

STRAUB Werke AG accepts no liability for damage arising as a result of the use of data, diagrams or application examples in this leaflet.

www.straub.Su



STRAUB Werke AG
Straubstrasse 13 - 7323 Wangs - Switzerland
Phone +41 81 725 41 00 - Fax +41 81 725 41 01
straub@straub.ch

www.straub.ch



ООО "Максиарм"
107241 г. Москва, проезд Черницынский д.3 с.1
т. +7 (499) 167 13 11, (925) 226 29 37/38
info@straub.Su
www.straub.Su