

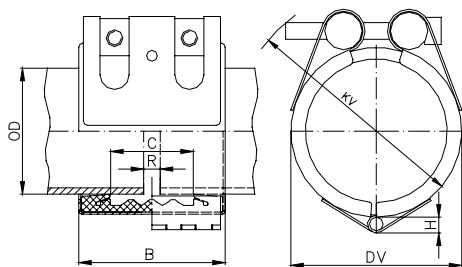
STRAUB-OPEN-FLEX | Ø 60.3 - 1016.0 mm

Petroleum Development Oman

Components / Materials	W1 *	W5
Casing	AISI A106, hot-dip galv.	AISI 316 L or similar
Bolts	AISI 4135	A4 - 80
Bars	AISI 12 L 14, galvanised	AISI 316 L or similar
Strip insert (option)	AISI 316 L / PVDF	AISI 316 L / PVDF

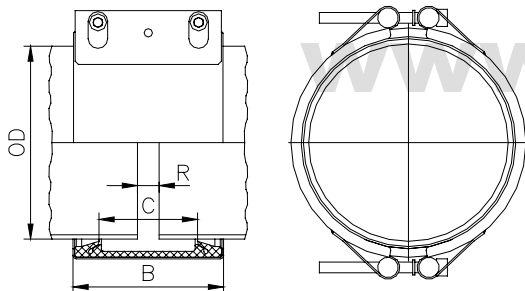
Sealing sleeve	Temp.: -20°C up to +80°C
NBR	Medium: water, gas, oil, fuel and other hydrocarbons

STRAUB-OPEN-FLEX 1L



Height (H)	OD [mm]	[mm]
	48.3 - 60.3	7.0
	73.0 - 114.3	9.0
	127.0 - 168.3	9.5

STRAUB-OPEN-FLEX 2LU | 2LV | 2XS * | 3X *



STRAUB OPEN FLEX	OD [mm]	Clamping range [mm]	PS [bar]	B [mm]	C [mm]	DV [mm]	KV [mm]	R without strip insert [mm]	R with strip insert [mm]	Torque rate [Nm]	Allen head [mm]	Thread M...
1L	60.3	59.0 - 61.5	45.0	75	35	82.0	95	5	15	7.5	6	8
	88.9	87.5 - 90.5	45.0	94	51	111.0	132	5	25	10	6	8
	114.3	112.5 - 116.0	45.0	94	51	136.0	157	5	25	10	6	8
	168.3	166.0 - 170.5	45.0	107	62	190.0	205	5	35	12	8	10
2LU	219.1	217.0 - 222.0	45.0	141	91	246.1	300	10	35	30	10	12
2LV	273.0	270.0 - 276.0	45.0	141	91	300.0	350	10	35	40	14	16
	323.9	321.0 - 327.0	45.0	141	91	350.9	397	10	35	40	14	16
	406.4	404.0 - 409.0	45.0	141	91	433.4	476	10	35	50	14	16
	508.0	505.0 - 511.0	45.0	141	91	535.0	574	10	35	60	14	16
2XS *	609.6	606.0 - 613.0	45.0	148	91	636.6	691	10	35	140	17	20
	711.2	708.0 - 715.0	45.0	148	91	738.2	790	10	35	140	17	20
	762.0	758.0 - 766.0	45.0	148	91	789.0	840	10	35	160	17	20
3X *	1016.0	1012.0 - 1020.0	30.0	218	127	1054.0	1103	15	60	125	17	20

Typing errors may occur. Technical details are subject to change.

REMARKS:

- Follow fitting / disassembly instructions
- PS = Working pressure considering the application loads
- Strip inserts are required for special applications

* XS- and X-version in W1